



### COMPATIBILITY

ATM INSPECT extends the range of functions of stereo microscopes and/or reflected light microscopes with interactive in-image-measurements and the generation of customized reports.

Recurrent tasks are processed at high rates using measurement templates and report templates.



## ATM INSPECT

The software package ATM INSPECT impresses with its intuitive and user-friendly design and provides an extensive toolbox for microscopic evaluation and the documentation of results.

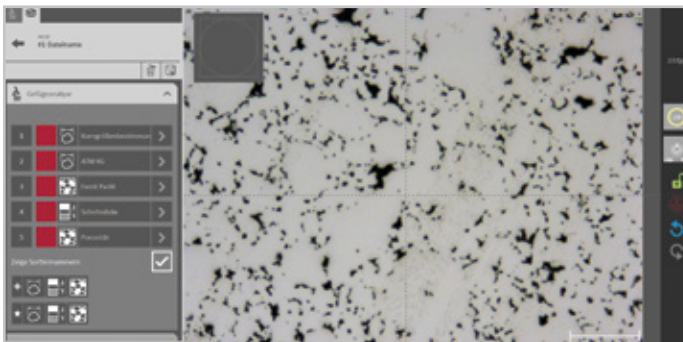
The feature-rich software basis is adaptable to customer-specific

tasks and can be extended with add-on modules.

With ATM INSPECT microscoping tasks can be executed very easy and highly precise in new and incomparable ways.

### FEATURES

The automatic brightness adjustment and the automatic shading correction lead to fast and usable image results. Simple measurements like lengths and areas are inserted by using overlay elements. Actually, the software basis provides measurement instruments to statistically evaluate layer thicknesses and grain sizes. Additionally, the software is able to load, to recalibrate and to size external images.



### SOFTWARE

The software has been developed to accommodate either touch or mouse operation in a 64-bit-Version (WIN 7/8/10).

A modular software structure allows customers to extend the portfolio of functions at arbitrary dates.

The microstructure analysis add-ons increase the degree of automation for phase analyses, layer thicknesses and grain sizes.

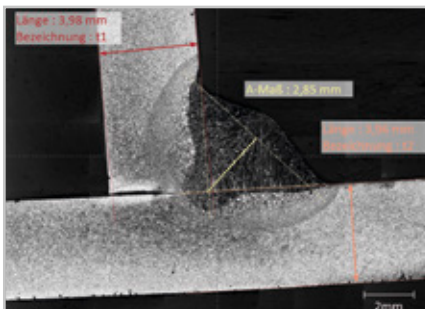
## ATM INSPECT

Order No.: M0610000

- » Win 7/8/10 (64-bit)
- » Intuitive control with touch- and mouse function
- » Automatic brightness adjustment
- » Automatic shading correction
- » Capture live images (save/load and paste into clipboard)
- » Load, recalibrate and size external images
- » Supported image formats: jpg, bmp, png, tif
- » Create, save and load individual measurement templates
- » Arbitrary configuration of sample positions (size, number, position) in the stage menu
- » Online user support and remote diagnosis (if internet access is available)

## Measurement capabilities

- » measurement functions: distance, angle, area, circles, polygon with dimensioning
- » automatic layer thickness measurement after manual labeling
- » automatic grain size analysis after manual labeling of grain boundaries
- » define grid pattern
- » lock individual metrics
- » magnetic reference points and lines
- » define zero point of coordinates
- » align measuring points using coordinates
- » edit color and font of measuring objects
- » image analysis software add-ons available for purchase



## Presentation and output of measuring results

- » report generator
- » output of overview images, value tables and diagrams
- » dynamic overview screen, e.g. when changing the live image section
- » update all items in the report for changes in the program
- » selection of parameters of a table and different compilation for multiple tables in a report
- » insert character elements such as rectangles and lines
- » define form fields
- » output format: PDF
- » laying existing forms in the background



## SOFTWARE (WIN7/8/10, 64 BIT)

## ATM INSPECT SOFTWAREUPDATE



Order NO.: 95014122

- » Softwareupdate to recent version

## EQUIPMENT

## CAMERA

Equipment 1  
**Inspect-Camera 1.3 MP (USB 3.0)**  
 Order No.: Z0610011

1280 x 1024 px

Equipment 2  
**Inspect-Camera 5 MP (USB 3.0)**  
 Order No.: Z0610015

2560 x 1920 px

## DATA CABLE USB 3.0

Order No.: Z0610020

## INSPECT ADD-ONS



- » Live image capturing/Loading of stored image
- » Multimage batch processing
- » Preprocessing filters (e.g. blurring, sharpen, normalize)
- » Object definition by gray and color thresholding
- » Morphological filters
- » Selection of image objects by predefined measure

**Inspect Coating Thickness Measurement**

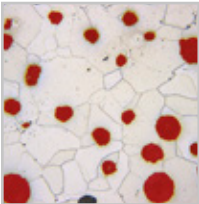
Order No.: Z0610033

- » Measurement of coating thickness according to DIN EN ISO 1463
- » Semi-automatic measurement of horizontally and vertically aligned coatings and curved coatings
- » Output of analysis results in terms of individual thicknesses in tables or graphs
- » Output of the coating thickness in terms of statistical quantities (e.g. mean, standard deviation, median, minimum, maximum)
- » Two preinstalled coating thickness measurements as favorites

**Inspect Phase Analysis**

Order No.: Z0610034

- » Automatized image object measurement
- » Measurement of phase fractions according to ISO 9042 and ASTM E562-11
- » Output of analysis results in terms of the relative/absolute area in tables or graphs
- » Statistical quantities (e.g. mean, standard deviation, median, minimum, maximum)
- » Preinstalled phase analysis as favorite

**Inspect Grain Size Analysis**

Order No.: Z0610035

- » Measurement of the grain size according to DIN EN ISO 643 and ASTM E112-13 including lineal and circular intercept procedures as well as the planimetric procedure
- » Output of analysis results in terms of tables and graphs
- » Acquisition of statistical quantities of the grain size as well as of the grain intercept lengths (e.g. mean, standard deviation, median, minimum, maximum)
- » Two preinstalled grain size analyses as favorites

