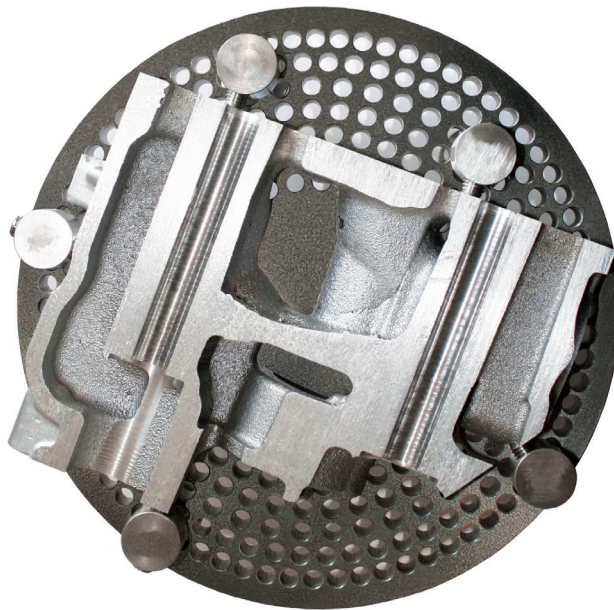
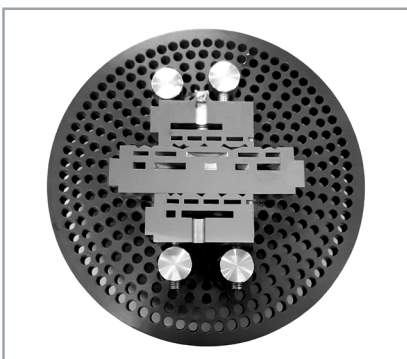
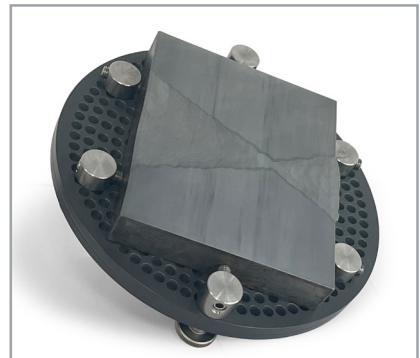


UNIVERSAL SAMPLE HOLDER FOR CENTRAL PRESSURE



Samples with big dimensions or complicated geometries which normally need manual preparation can be fixed with the universal sample holder for automatic grinding and polishing.

- | The sample holders are available in the fixture variants M and L
- | For fixing the sample on the sample holder you can choose between different clamping fixtures
- | Made of anodised aluminium



UNIVERSAL SAMPLE HOLDER FOR CENTRAL PRESSURE

TIPS FOR YOUR PRACTICE

- | The sample should be prepared as plane parallel as possible (max. difference 0.5-1 mm)
- | The sample should be as flat as possible (depending on clamping set min. 12, max. 20-25 mm)
- | The samples should have a minimum size to prevent the sample holder from tilting.
This minimizes vibrations in the machine and unevenness on the preparation surface
(empirical formula: outer sample diameter : sample height > 6:1)
- | The holder should be as small as possible, so the preparation takes place at the outer areas of the working wheel
- | Samples should lie flat - otherwise they can be supported by the supporting set.
- | Depending on the application and preparation parameters, high shear forces can occur during preparation.
Sufficient fixation of the sample on the sample holder must be ensured.

UNIVERSAL SAMPLE HOLDER

Dimensions **Order No.:**

for fixture M

Ø 140 mm **Z5445037**

for fixture L

Ø 160 mm **Z5446039**

Ø 185 mm **Z5446040**

Ø 204 mm **Z5446041**



For the sample height the capacity of the grinding and polishing machine must be taken into account:

Device	Sample height
Qpol 250 ECO	10 - 15 mm
Qpol 300 ECO+	10 - 15 mm
Saphir 550/560	10 - 25 mm
Qpol/Qgrind XL	10 - 25 mm
Qpol 250 BOT	10 - 20 mm

ACCESSORIES

SUPPORTING SET (1 PIECE)

for supporting from 3 to 12 mm

Order No.: Z5440101



CLAMPING SET (1 PIECE)

for individual lateral clamping of samples

Clamping set 1 clamping head height* 10 mm

Clamping set 2 clamping head height* 12 mm

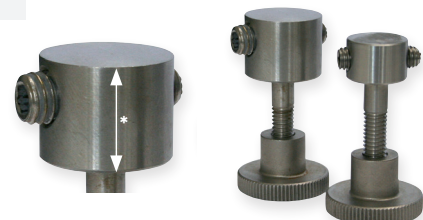
Clamping set 3 clamping head height* 16 mm

Order No.:

Z5440102

Z5440103

Z5440104



BASE STAND

for easy clamping of the sample on the sample holder

Order No.: Z5440092

